

Earthquakes, Fires and Floods: Disaster Planners Unite!



Napa County

Earthquake



FIRE CONCERNS



NATURAL DISASTERS

DISEASE

FLOOD

STORM

FIRE

DROUGHT

EARTHQUAKE



ARE YOU PREPARED?



YOUR OFFICE IS DAMAGED

Where CAN you relocate?

How long will it take to setup and operate?

Do you have backup equipment?

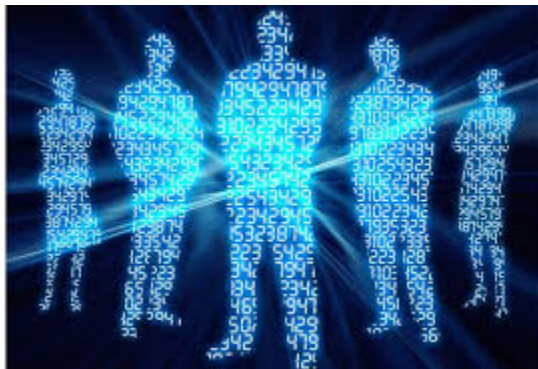
Security of staff and monies?

WHERE IS YOUR DATA?

Copy of backup accessible?

How much time will it
take?

Can you accept and
process payments?



Does your IT Department have a
plan to restore your
information?

SHARE THE INFORMATION

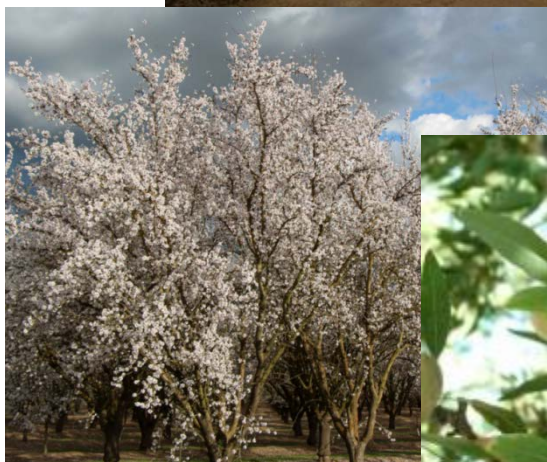
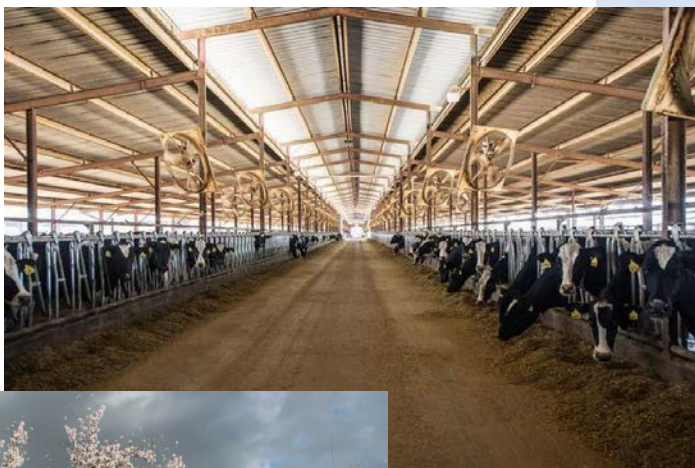


MERCED



COUNTY

FLOODS





Black Rascal Creek breaches levee (4/2006)

April 5, 2006 - Levee break floods neighborhoods in Merced

MERCED, Calif. (AP) — Northern Californians braced for more rain a day after two levee breaks in the Central Valley forced evacuations from residential neighborhoods and inundated farmland.

The levees gave out Tuesday as record-breaking rains continued to pound Northern California



March 2, 2010

Merced County pushes forward with long-delayed flood control project

A flood control program for Merced County that was passed by the U.S. Congress in 1944 is still incomplete. To this day, there's no flood control structure at Black Rascal Creek to keep the destructive waters from flowing into homes, as they did in 2006. That work has been stalled because the flood control project has been under evaluation with the Army Corps of Engineers since the late 1990s.

According to FEMA, approximately 380,000 acres in Merced County are located within a 100 year floodplain.

August 31, 2012- Merced Integrated Regional Water Management Plan Existing Regional Flood Management Summary

The City of Merced, County of Merced, and Merced Irrigation District are currently leading the preparation....to summarize flood management issues and identify opportunities to integrate flood management into the overall water system management for the region.

Outcome – we need \$1.26Billion for all projects.

The screenshot shows a web browser window displaying the Merced County Office of Emergency Services website. The browser's address bar shows the URL www.co.merced.ca.us/index.aspx?nid=1599. The website header features a landscape image with the text "MERCED COUNTY CALIFORNIA". Below the header is a navigation menu with links for "About Us", "County Departments", "County Services", and "Business Resources". A search bar is also present. The main content area is titled "Office of Emergency Services" and includes a "What's New" section with several news items, a "General Flood Information" section with links to various resources, and contact information for the Merced County Office of Emergency Services (OES). The contact information includes the address (3500 N Apron Ave, Atwater, CA 95301), phone numbers (209) 385-7548 and (209) 725-0174, and the OES Emergency Information Line phone number (209) 385-7379. The website also features a sidebar with links to "HOME", "AGENDAS", "RSS", "Carbon Monoxide FAQ", "Incidents", and "Map Location".

December 2, 2014 -
Storm causes some flooding in Merced and county.

Even in a drought year!

Merced County Treasurer-Tax Collector's Efforts towards Preparedness

- ❖ WF Token Security for all Treasury Staff
- ❖ Dedicated WF Workstation in Office
 - Access all CEO daily reports via secured portal (no internet/email)
- ❖ Dedicated Laptops at Remote Locations throughout County
 - Remotely used throughout the year when banks are open and the County closed.
 - Only access to WF CEO and Cloud (no internet/email)
- ❖ Cloud Storage for the Treasury staff to access vital documents that are core to the operation, I.e.
 - Daily cashflow, Treas to Bank and Treas to GL reconciliations.
 - Dropbox for Business
 - Box.com
 - Microsoft's OneDrive for Business
 - Data Encryption – At Rest and in Transit
 - Security – User Management Console – Folder and File Level Security
 - Reporting – Auditing and Reporting
 - Cost - \$300 per Year – 5 Users
 - Storage – 1 TB per User
 - Active Directory Integration – Microsoft Active Directory Federated Service or Third Party Software can be used.
 - Online Manipulation of Microsoft Office Products – Yes – Office Online Included

What if the County Admin Building Floods?

- ❖ Confirmed that WF will have the last payroll available for reissuance.
- ❖ Confirmed with IT last welfare run will be available for reissuance.
- ❖ Taxes, MegaBytes, Pay Cards
- ❖ IT request for off-site communication center at Castle Air force Base
- ❖ Cost-Benefit
- ❖ Much Uncertainty....



What stage are you at in
Preparedness?

Share your experience.

Let's continue the dialogue!